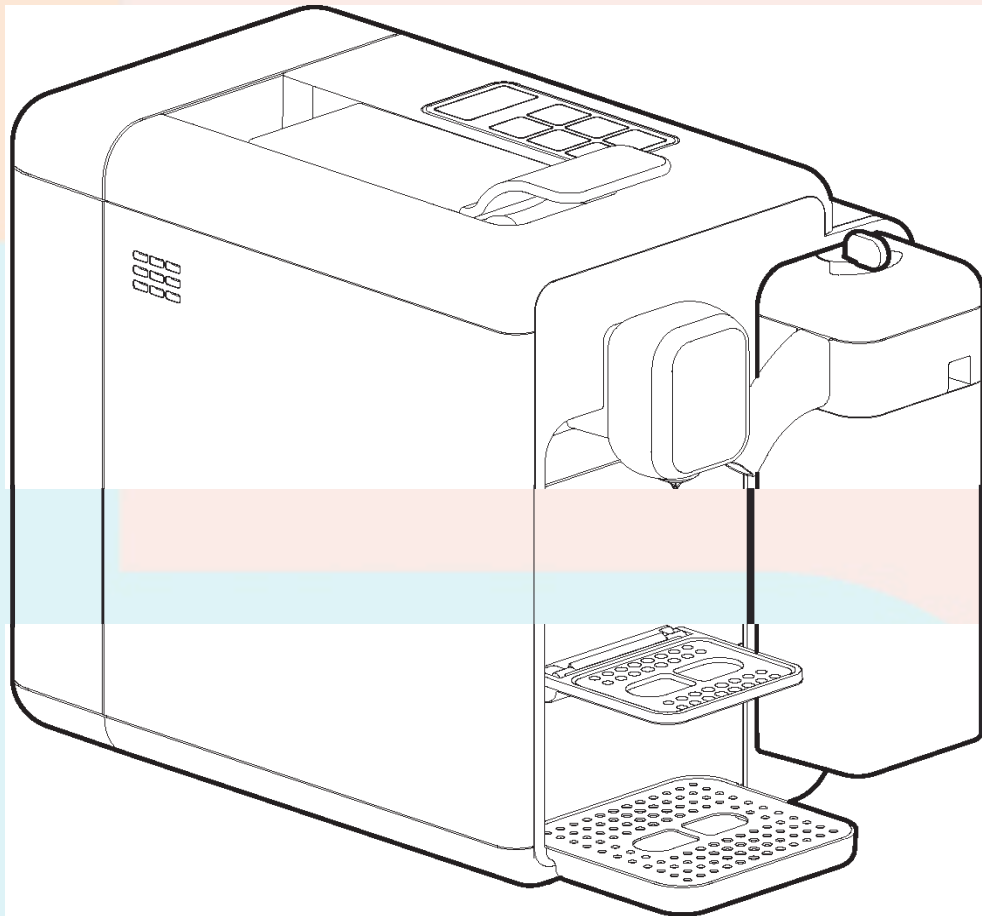


# How to Use and Care for Your Slek



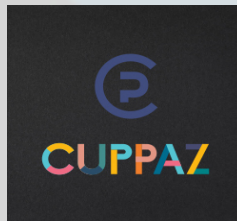


info@cuppaz.com

hotline: 852 2812 0428

## Table of Contents

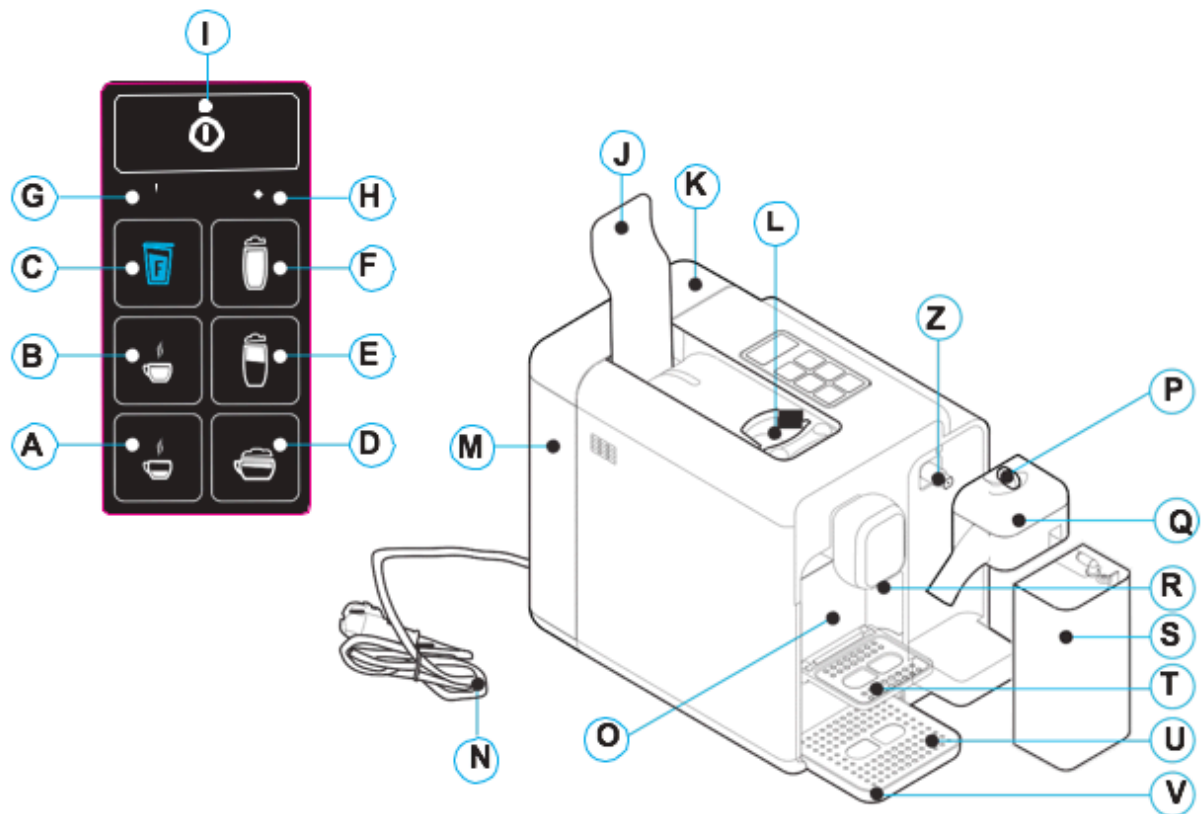
Get to know the important buttons, lights and key parts.....	3
This part should be read carefully: it's about safety!.....	4
First time using The Sleek? Follow these 7 steps for the priming cycle!.....	7
Rinsing in 8 steps after the priming cycle.....	9
Turning on The Sleek in 6 steps.....	12
Adjusting for cup height in 1 step.....	14
The Correct Use of Buttons.....	14
Dispensing your beverage from The Sleek in 7 steps .....	16
Reprogramming the quantity of beverage.....	19
Dispensing cappuccino / milk coffee in 9 Steps with The Sleek.....	20
Dispensing Milk with The Sleek in 4 Steps .....	24
Reprogramming the Amount of Milk in the Cup in 4 Steps .....	26
Milk Jug Cleaning Cycle in 4 Steps.....	28
How The Sleek communicates with you.....	30
Refilling the water tank in 3 steps.....	32
Daily Cleaning and Maintenance of your Sleek in 12 steps.....	33
The Sleek helps you save energy.....	36
The Sleek will let you know when it is time to descale.....	36
How to descale The Sleek in 15 steps.....	37
Troubleshooting with The Sleek.....	41
Technical data on The Sleek.....	42
Recycling and Responsible Disposal.....	43
Scan to order machines and capsules using QR codes.....	44



info@cuppaz.com

hotline: 852 2812 0428

**Get to know the important buttons, lights and key parts that will allow you and The Slek to communicate!**



A: "Espresso" button;  
 B: "Caffè lungo" (long coffee) button;  
 C: "Caffè filtro" (filter coffee) button;  
 D: "Cappuccino" button;  
 E: "Milk coffee" button;  
 F: "Milk" button;  
 G: "Multifunction" indicator light;  
 H: "Descaling" indicator light;  
 I: On/Off switch;  
 J: Capsule compartment opening / closing lever;  
 K: Water tank cover;

L: Capsule compartment;  
 M: Water tank;  
 N: Power cord;  
 O: Used capsule drawer;  
 P: Milk jug knob;  
 Q: Milk dispenser;  
 R: Coffee dispenser;  
 S: Milk jug;  
 T: Top grille for cups;  
 U: Drip-tray grille;  
 V: Drip-tray;  
 Z: Steam outlet fitting.



info@cuppaz.com

hotline: 852 2812 0428

## **This part should be read carefully: it's about safety!**

The Sleek was designed for domestic use and similar purposes. For example the Sleek likes it in staff kitchen areas in shops, offices and other workplaces. Also in hotels, lodges, motels, Bed & Breakfasts and other residential environments.

The Sleek only recognizes **Cuppaz/Caffitaly System** capsules. The combination of the smart technology in these capsules and the technology in The Sleek will make you a delicious beverage! Please don't try to give The Sleek another type of capsule as this will not work and could lead to malfunctioning.

Please only use The Sleek as directed here. It means that our guarantee to you can be fulfilled. When the Sleek has been used improperly (in a way not explained here), our manufacturer can't be responsible for injury or damage. Sorry!

After removing the packaging, check that The Sleek is not damaged. If damage is found, or upon the first sign of a defect (unusual noise or odors), or if any problem occurs inside The Sleek, don't use it and contact Cuppaz at [info@cuppaz.com](mailto:info@cuppaz.com) or call the Cuppaz hotline at: 852 2812 0428. We'll get you an undamaged Sleek right away!

Don't leave the packaging elements (plastic bags, etc.) within reach of children, as they are potential sources of danger for them.

Only use The Sleek if the power cord is intact. If the cord is damaged you can get an electric shock, so please don't plug it in anywhere. Again: contact Cuppaz at [info@cuppaz.com](mailto:info@cuppaz.com) or call us at 852 2812 0428 for a new machine.

Only use and store The Sleek indoors. Make sure the electrical elements, plug and cord, remain dry. Never submerge The Sleek in water (it doesn't swim!).





info@cuppaz.com

hotline: 852 2812 0428

Protect The Slek from sprays and drips. Water and electricity together can cause danger of electrocution.

Only connect The Slek to power outlets complying with the requirements of the law. Make sure that the power supply voltage matches the rating shown on the data plate, located on the bottom of The Slek.

The surface on which The Slek is installed must be level, solid, stationary and heat resistant; the bearing surface must not exceed an angle of 2°. No wobbly surfaces for The Slek!

Don't leave The Slek's power cord near hot surfaces, sharp edges or other sharp objects that can damage it.

Never place your hands inside the capsule compartment as this can cause injury.

Always close the lever of the Slek. Never open the lever while a beverage is being dispensed.

Never remove machine parts, except those indicated in this guide for daily maintenance.

Don't insert objects into the openings as this could cause electric shocks. Don't attempt any operation on The Slek that is not described in this guide. Contact Cuppaz for support at [info@cuppaz.com](mailto:info@cuppaz.com) or call us at 852 2812 0428.

Don't pull on the power cord to disconnect it. Remove the plug instead to avoid damaging it.

The Slek can be used by persons with reduced physical, sensory or mental capabilities or lack of experience and knowledge if they have been given supervision or instruction concerning use of the appliance in a safe way and understand the hazards involved.



info@cuppaz.com

hotline: 852 2812 0428

The Sleek can be used by children aged from 8 years and above if they have been given supervision or instruction concerning use of the appliance in a safe way and if they understand the hazards involved. Cleaning and user maintenance shall not be made by children unless they are older than 8 and supervised. Keep The Sleek and its cord out of reach of children aged less than 8 years. Children being supervised not to play with The Sleek.

Descale the appliance regularly, following the instructions provided. The Sleek may be damaged if you skip descaling. The Sleek will let you know when to descale.

Clean The Sleek carefully and regularly following the guidelines. If it is not cleaned, the build-up that forms may be bad for your health. Unplug The Sleek and allow it to cool before cleaning.

If you do not expect to use The Sleek for a long period of time (leaving on vacation, etc.), please unplug it.

**Thanks for helping us make your experience with The Sleek a safe, pleasant, and inspiring one by following these safety guidelines!**



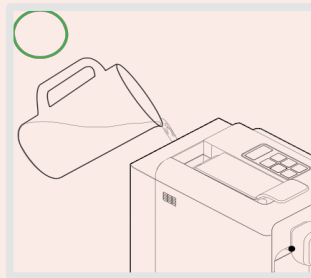


info@cuppaz.com

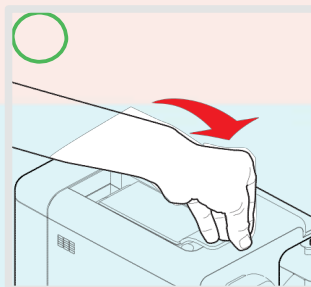
hotline: 852 2812 0428

**First time using The Sleek? Or haven't used The Sleek in awhile?  
Follow these 7 steps for the priming cycle!**

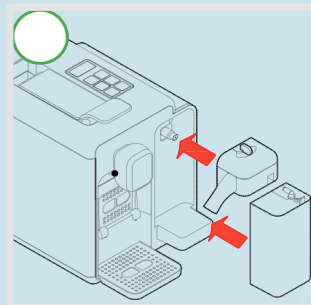
1.Fill the tank with fresh, still water.



2.Make sure the lever is closed.

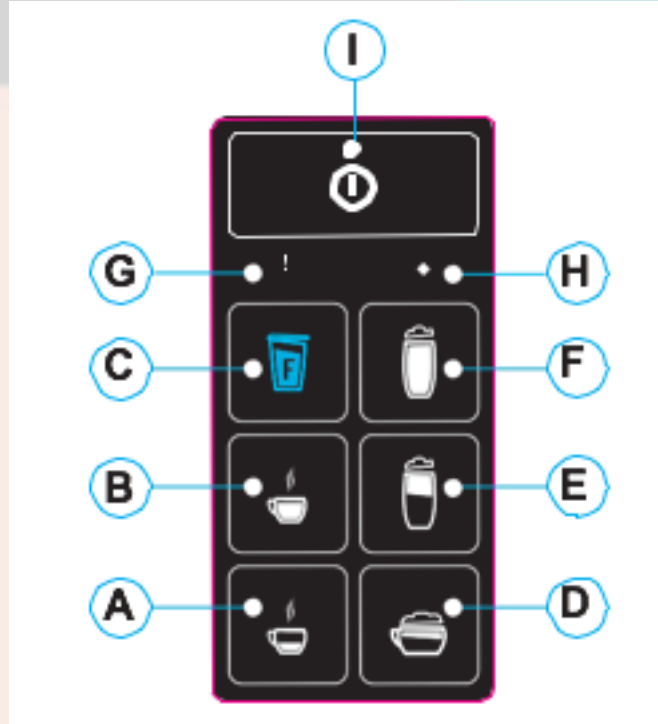


3. Fit the milk dispenser first and then the jug in its special place.



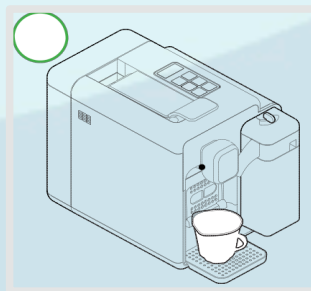


4. Plug in the appliance and turn it on by pressing the button I.



5. Together with buttons A-B-C, indicator light G also blinks alternately RED.

6. Place a large container (at least 250ml) under the coffee and milk dispensers.



7. Press one of the buttons A-B-C. Wait for the machine to complete the water circuit filling cycle. The indicator G light goes off.

Note: if the indicator light G continues to blink RED after the filling cycle, repeat the previous steps.





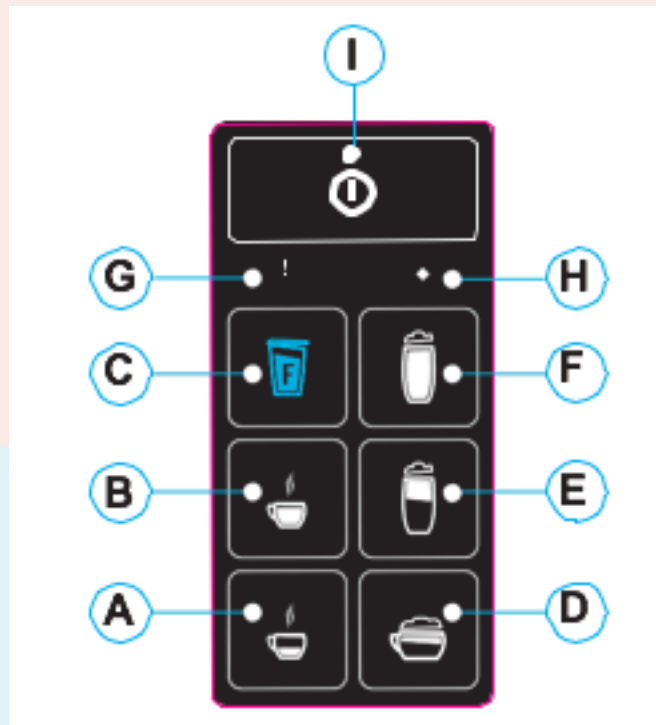
info@cuppaz.com

hotline: 852 2812 0428

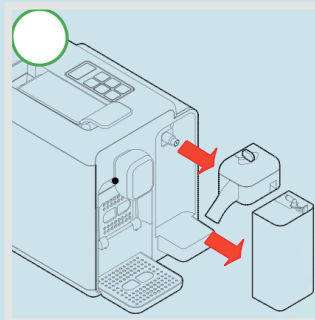
## Rinsing in 8 steps after the priming cycle

Buttons **A, B, C, D, E and F** will blink simultaneously when The Slek is warming up.

1. When buttons **A, B, and C** light up steady, do the rinse by pressing button **C**. Press the button again to do another rinse.



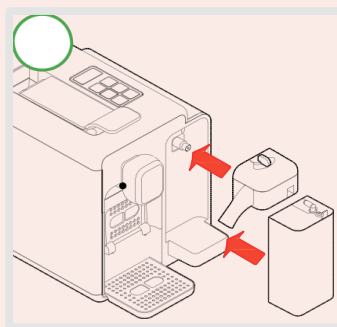
2. Only remove the milk jug.



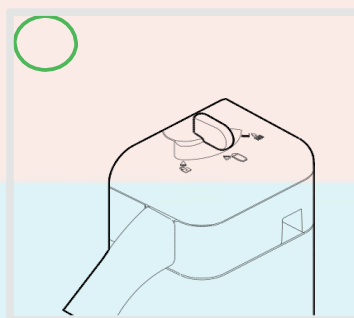


3. Fill the milk jug with water.

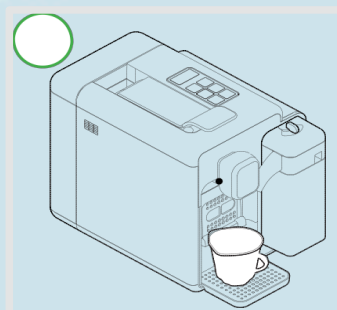
4. Fit the milk jug in its special place.



5. Make sure the milk jug knob is in the dispensing position.



6. Place a large container (at least 250ml) under the milk dispenser.

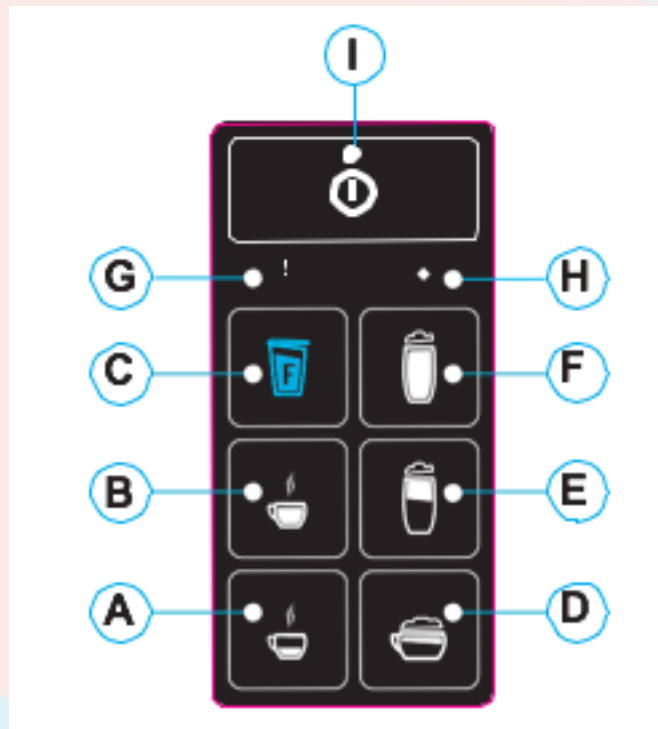




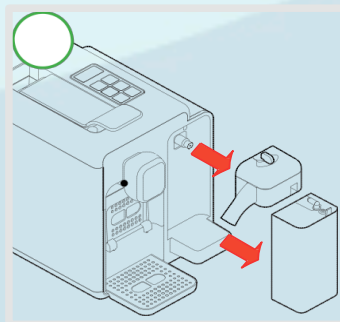
info@cuppaz.com

hotline: 852 2812 0428

7. When buttons D, E, F light up steady, do the rinse by pressing button F. Press the button again to do another rinse.



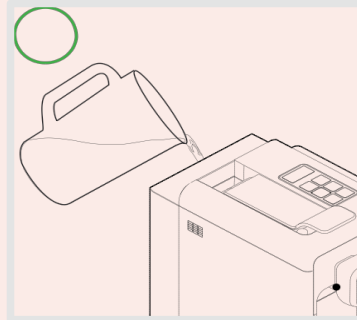
8. After this operation remove and rinse the used capsule drawer and milk jug.



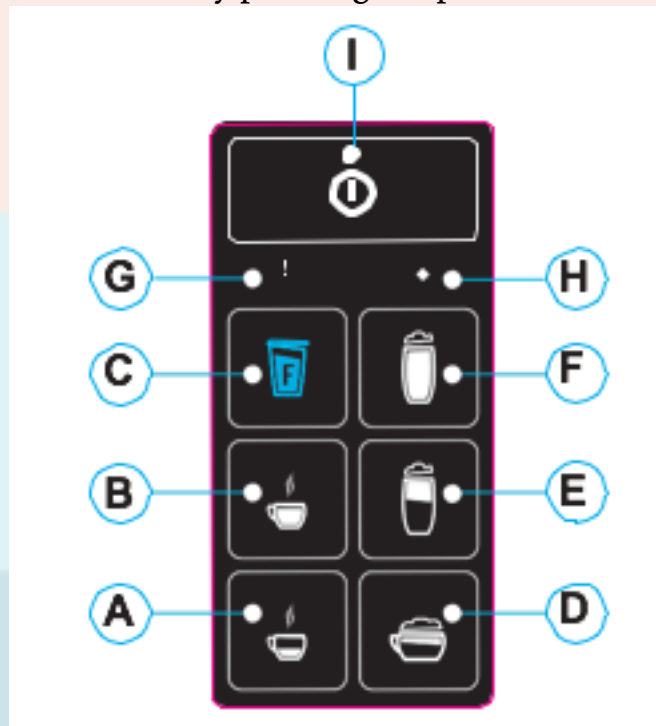


## Turning on The Slek in 6 steps

1. Fill the tank with fresh, still water.



2. Switch on The Slek by pressing the power on/off switch I.



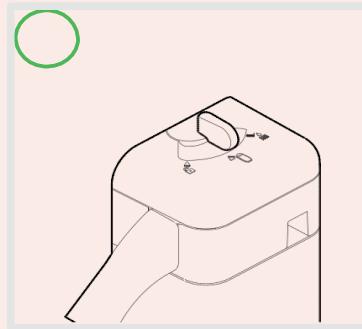
Buttons **A**, **B**, and **C** will blink simultaneously to tell you that The Slek is warming up. When the buttons remain steadily lit, The Slek is ready to use.



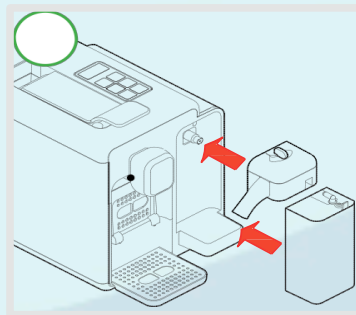
3. Fill the jug with the desired amount of milk.

4. Position the milk jug lid.

5. Make sure the milk jug knob is in the dispensing position.



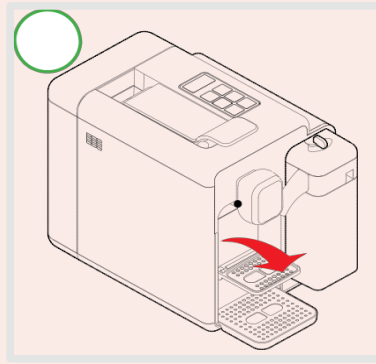
6. Fit the milk dispenser first and then the jug in its special place. Buttons D,E, F blink. When buttons D, E, F light up steady, the machine is ready to dispense milk.



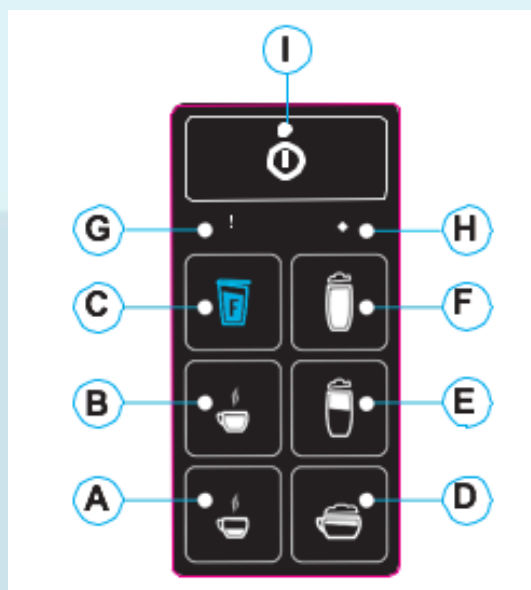


## Adjusting for cup height in 1 step

The Sleek can be adjusted for the use of large cups or small (espresso) cups. The machine is initially set for the use of large cups. For the best results when using small espresso cups, lower the top grill and place the small cup there. Now the espresso cup will be directly under the coffee dispenser.



## The Correct Use of Buttons





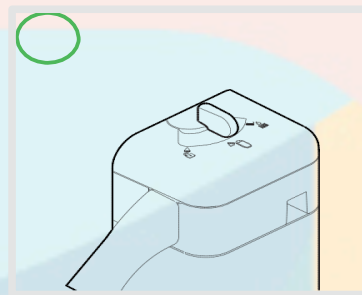
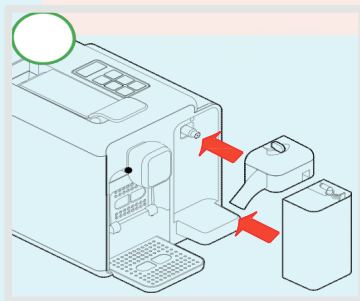
info@cuppaz.com

hotline: 852 2812 0428

To dispense an espresso, use button **A** lit up **white**. Button **B**, lit up **white**, is typically for the milk and hot chocolate, while Button **C** lit up **BLUE** must only be used for filter coffee or teas.

Do not use button **C** for espresso or any other coffee with an intense flavor. In this function the machine is set for low pressure and this reduces the "crema" (the thin creamy layer on top of the espresso), diminishes the flavor of the coffee, and could cause a break in the flow.

Buttons **D-E-F** are to be used only for dispensing beverages with milk, always making sure the jug is properly in place and that the knob is in the dispensing position.



**NOTE:** Traces of the beverage just dispensed may remain in the circuit of The Sleek. To retain maximum beverage flavor, we suggest rinsing between beverages. Rinsing is easy: simply dispense a beverage using button B without inserting a capsule.

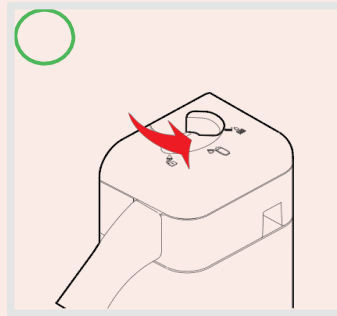




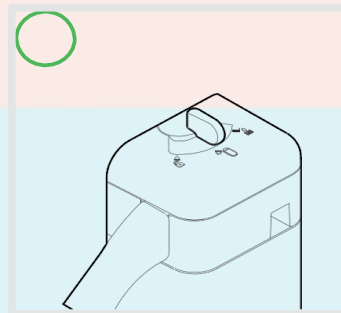
info@cuppaz.com

hotline: 852 2812 0428

After every dispensing of beverages with milk, it is advisable to do a cleaning cycle, placing a container (at least 250 ml) under the milk dispenser and turning the milk jug knob anticlockwise to the right.

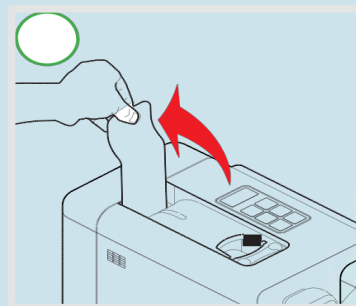


**Do not interrupt the cleaning cycle.** At the end a beep sounds. Only then, turn the milk jug knob to the dispensing position. **It is advisable to carry out this operation at least once a day if dispensing a beverage with milk.**



## Dispensing Your Beverage from The Slek in 7 steps

1. Raise the lever to open the capsule compartment.

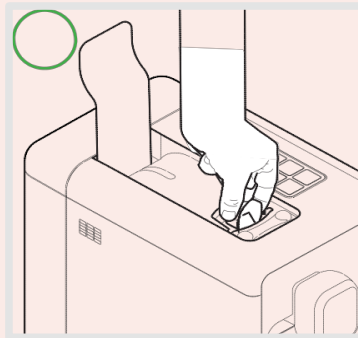




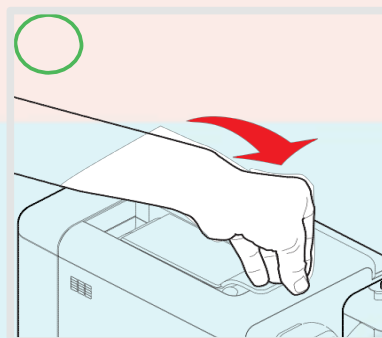
info@cuppaz.com

hotline: 852 2812 0428

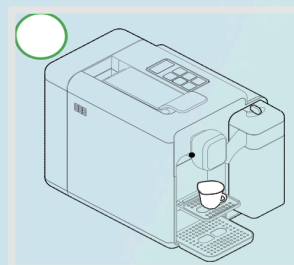
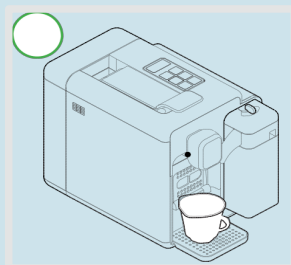
2. Read the top foil cover of the capsule or the side of the capsule box to know which button you'll have to press (button **A** for the small cup, button **B** for the medium size cup and button **C** for the large cup) and then insert the capsule into the capsule compartment, pressing gently.



3. Close the lever fully.

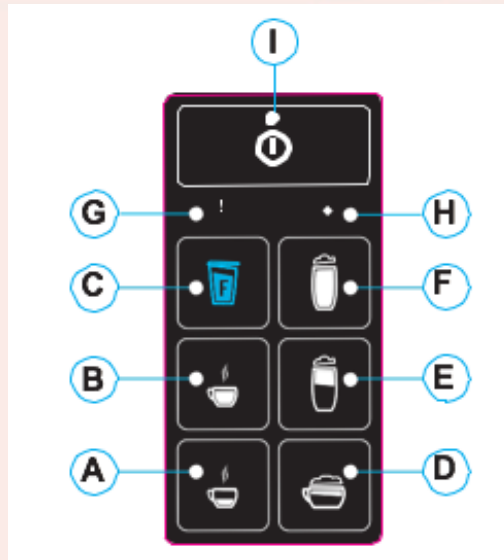


4. Place an appropriate sized cup under the dispensing spout.



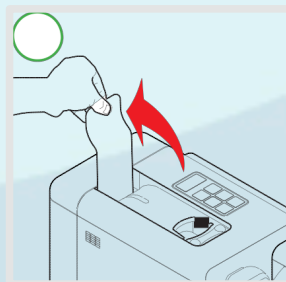


5. Press (briefly) the correct sized button **A**, **B** or **C** that was indicated on the top foil cover of the capsule or on the side of the capsule box.

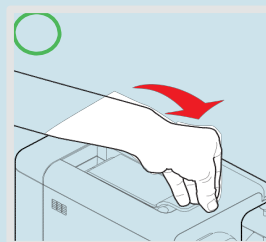


The pressed button will flash. The Slek will stop dispensing on reaching the programmed quantity and emit a beep.

6. Raise the lever to eject the used capsule into the drawer.



7. Close the lever.





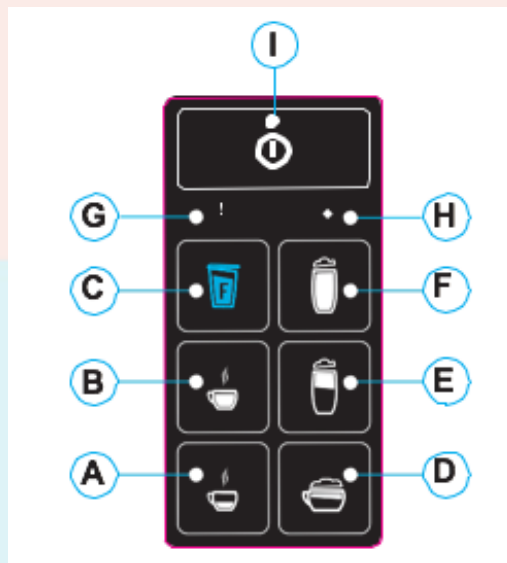
info@cuppaz.com

hotline: 852 2812 0428

## Reprogramming the quantity of beverage

The Sleek comes with factory-recommended quantity settings for each of **A**, **B** and **C**, but you can reprogram this to personal taste and the size of the cups you're using. However the factory recommended settings are considered to be the optimal quantities to achieve a desirable and tasty beverage. Changing the quantities will change the taste of your beverage.

Follow steps 1 to 4 of “Dispensing your beverage from The Sleek” and then do the following: Press **and hold down** the button **A**, **B** or **C** you want to reprogram.



On reaching the desired amount of beverage, release the button.

Now the button is reprogrammed. **The quantity of beverage dispensed can be programmed from a minimum of 20ml up to a maximum of 250 ml.**

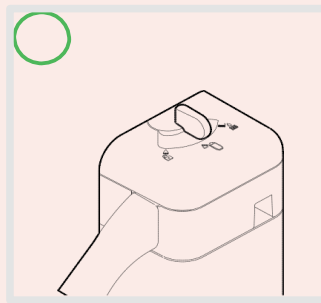


info@cuppaz.com

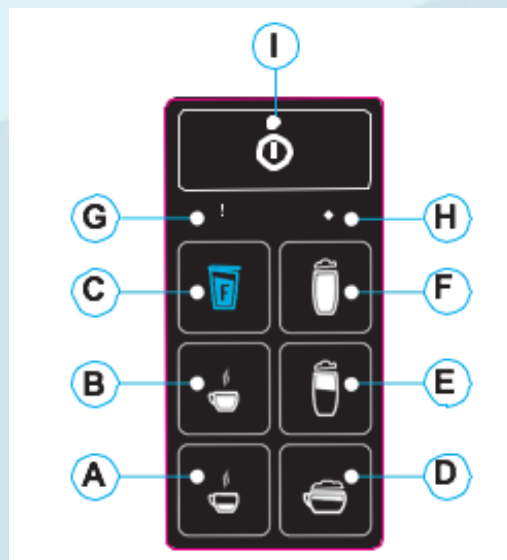
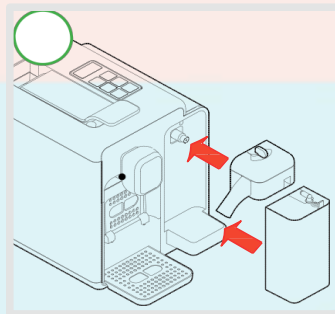
hotline: 852 2812 0428

## Dispensing cappuccino / milk coffee in 9 Steps with The Sleek

1. Fill the jug with the desired amount of milk. Make sure the milk jug knob is in the dispensing position.

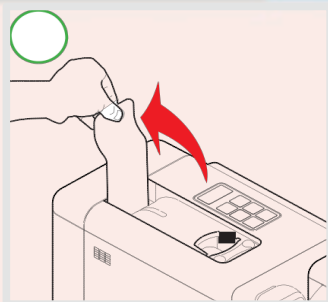


2. Fit the milk dispenser first and then the jug in its special place. Buttons D-E-F blink. Wait until they light up steady.

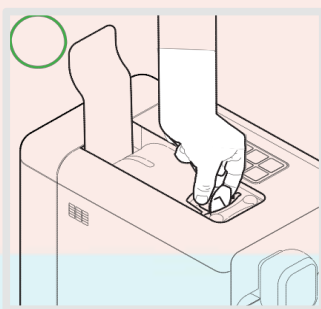




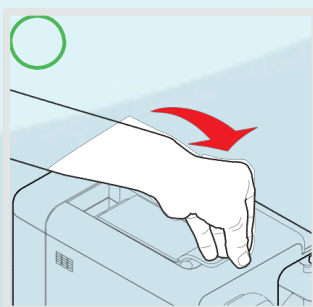
3. Raise the lever to open the capsule compartment.



4. Insert the capsule, pressing it gently inside.



5. Close the lever fully.

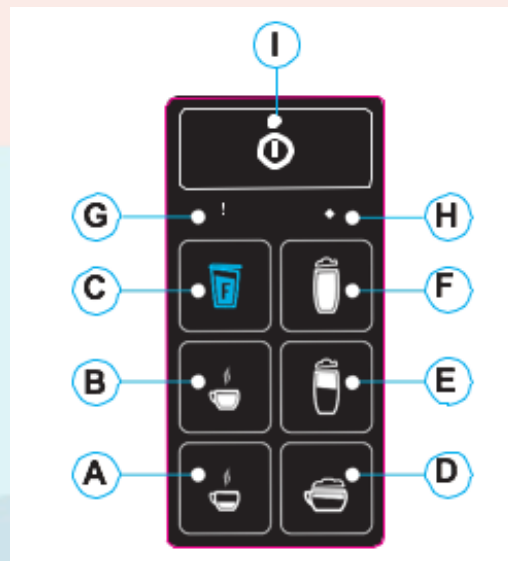




6. Place a cup under the coffee and milk dispenser.



7. Press (briefly) button **D** or **E**, depending on the desired beverage with milk. The pressed button will blink. The machine dispenses the programmed amount of milk. The coffee is then automatically dispensed. Dispensing stops if the button selected during the cycle is pressed.



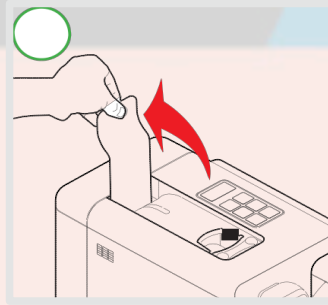




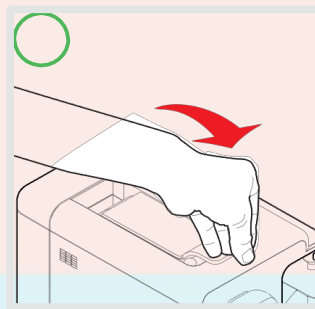
info@cuppaz.com

hotline: 852 2812 0428

8. Raise the lever to eject the used capsule into the drawer.



9. Close the lever.

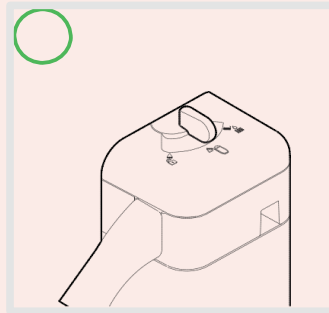


**Note: For better results, use milk at temperature approx. 4°-8°C. • If the milk jug is removed and put in the fridge, it is advisable not to keep the milk for more than two days. Do the "Milk jug cleaning cycle" (see the relevant section) after every dispensing of a beverage with milk.**

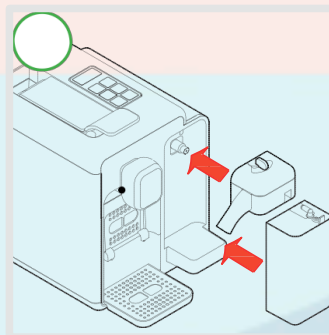


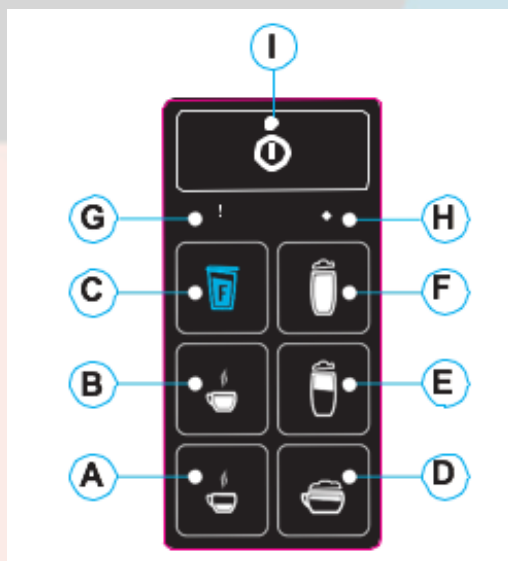
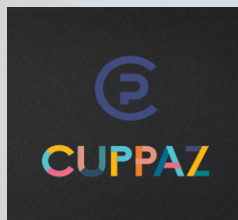
## Dispensing Milk with The Sleek in 4 Steps

1. Fill the jug with the desired amount of milk.  
Make sure the milk jug knob is in the dispensing position.

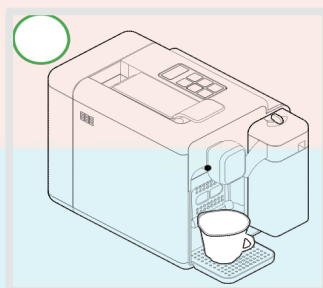


2. Fit the milk dispenser first and then the jug in its special place. Buttons **D-E-F** blink. Wait until they light up steady.

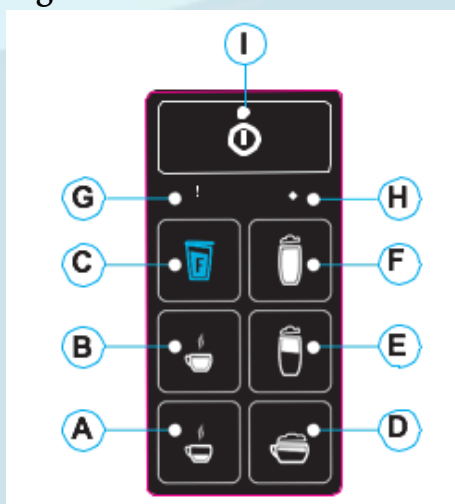




3. Place a cup under the milk dispenser.



4. Press button F. The pressed button will blink. Dispensing stops when the programmed amount is reached.





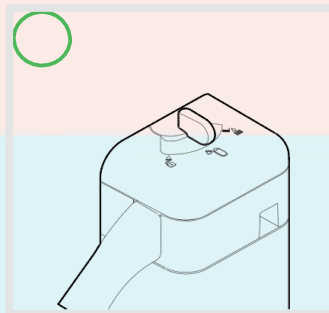
info@cuppaz.com

hotline: 852 2812 0428

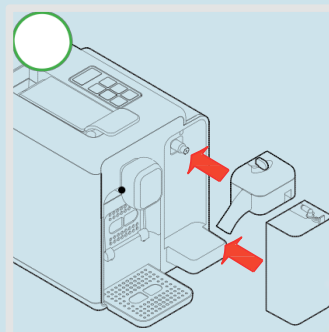
**Note: For better results, use milk at temperature approx. 4°-8°C. If the jug is removed and put in the fridge, it is advisable not to keep the milk for more than two days. Do the "Milk jug cleaning cycle" (see the relevant section) after every dispensing of a beverage with milk.**

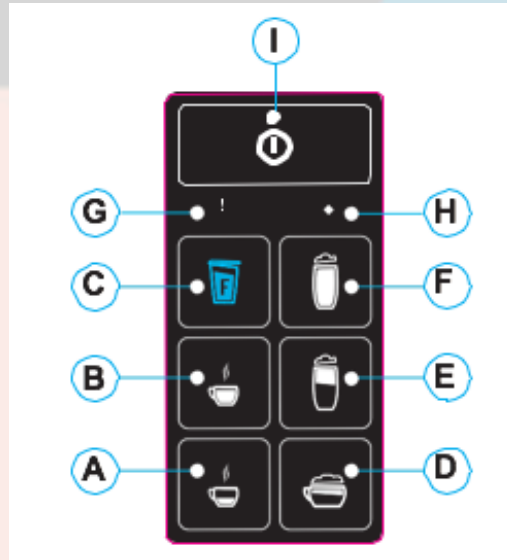
## **Reprogramming the Amount of Milk in the Cup in 4 Steps**

1. Fill the jug with the desired amount of milk. Make sure the milk jug knob is in the dispensing position.

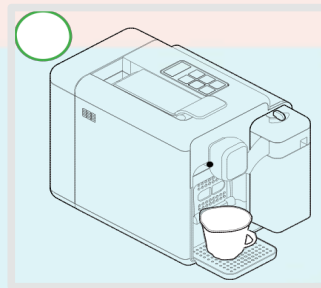


2. Fit the milk dispenser first and then the jug in its special place. Buttons **D-E-F** blink. Wait until they light up steady.

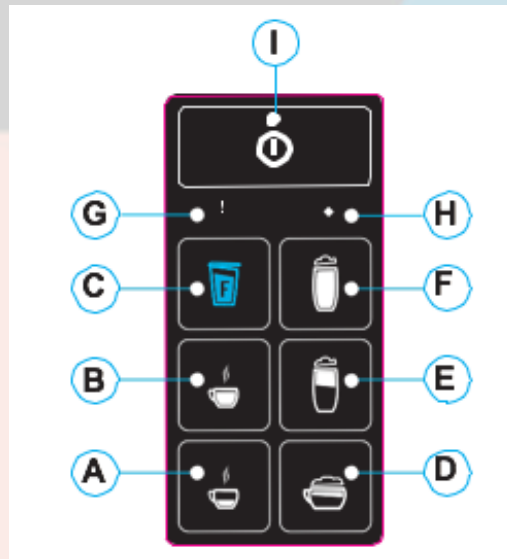
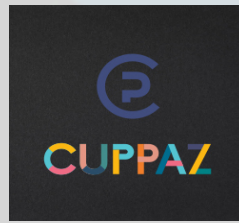




3. Place a cup under the milk dispenser.



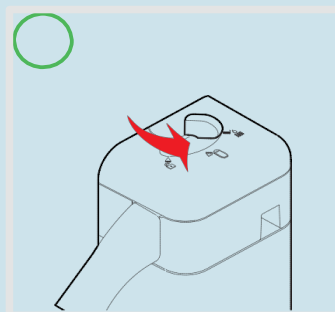
4. Press and **hold down** button **D**, **E** or **F**, depending on the desired beverage with milk. On reaching the desired amount of milk, release the button. The button is now programmed. If button **D** or **E** is pressed, the machine will automatically dispense the coffee once released.



## Milk Jug Cleaning Cycle in 4 Steps

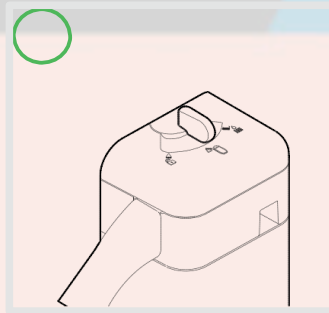
After each dispensing beverages with milk, it is advisable to do a cleaning cycle before removing the jug and putting it in the fridge.

1. Place a container under the milk dispenser.
2. To do the cleaning cycle, turn the milk jug knob anticlockwise to the right. Do not interrupt the cleaning cycle! At the end a beep sounds.

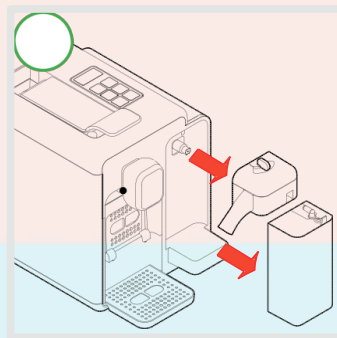




3. Turn the milk jug knob to the dispensing position.



4. Remove the jug.

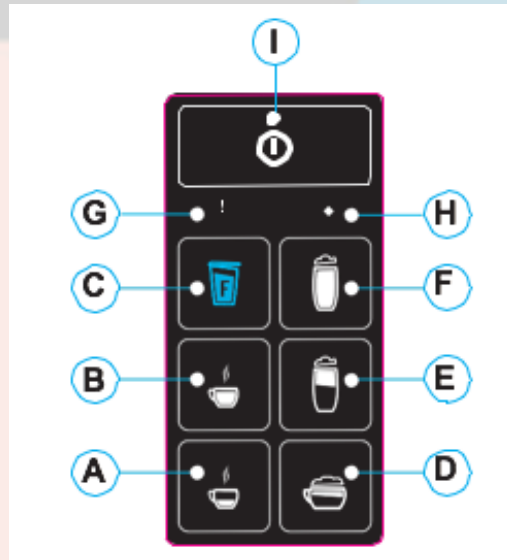


**Note: If the milk jug is removed and put in the fridge, it is advisable not to keep the milk for more than two days.**





## How the Sleek communicates with you



### **“I need to be descaled”**

When warning light H blinks yellow, a descaling cycle should be carried out (see section on “How to descale The Sleek”).

### **“My coffee circuit is warming up”**

Buttons A, B, and C blink simultaneously. Wait until they stop blinking.

### **“My milk circuit is warming up”**

Buttons D, E, and F blink simultaneously. Wait until they stop blinking.

### **“I’ve run out of water”**

When warning light G blinks red and the machine beeps intermittently beep, the water tank is empty (see section on refilling the water tank in 3 steps).



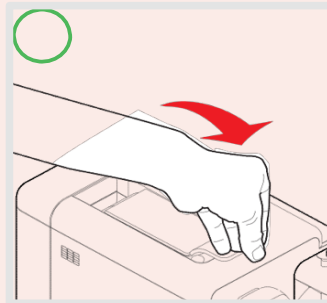
info@cuppaz.com

hotline: 852 2812 0428

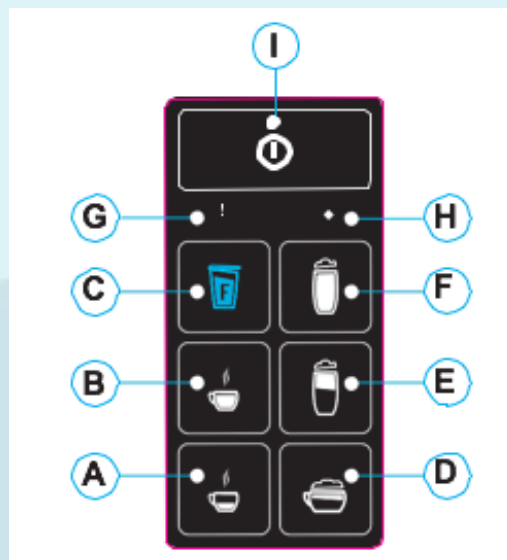
### **“You raised my lever while I was busy dispensing a beverage”**

Raising the lever while dispensing a beverage may cause splashes of hot water and danger of scalding! Warning light G blinks red. The Sleek will immediately stop dispensing to be safe. To resolve, follow these 2 steps:

1. Close the lever.



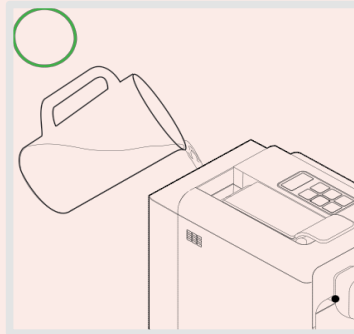
2. Press one of the buttons **A**, **B**, or **C** to reset the alarm and The Sleek is ready for use again.



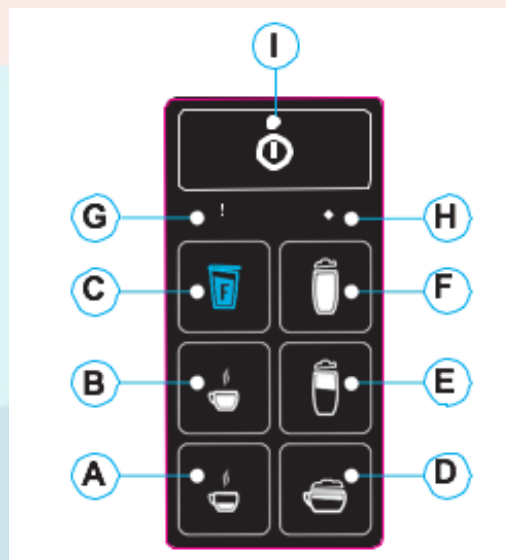


## Refilling the water tank in 3 steps

1. Fill the water tank with fresh, still water.



2. Press one of the buttons **A**, **B**, or **C**. Wait for The Slek to complete the priming cycle and fill with water.



3. When buttons **A**, **B**, **C** turn on and remain steadily lit, The Slek is ready for use.

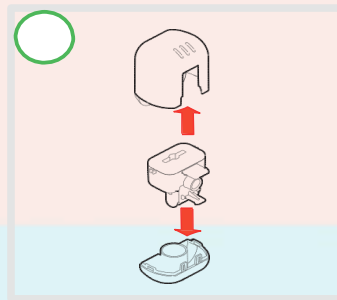


info@cuppaz.com

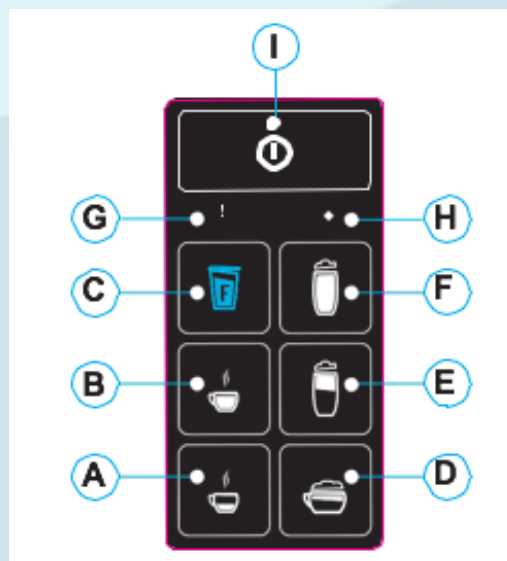
hotline: 852 2812 0428

## Daily Cleaning and Maintenance of your Sleek in 12 steps

1. Remove the drip tray and used capsule drawer.
2. Lift the used capsule drawer and empty and rinse it.
3. Remove the water tank; empty and rinse it.
4. Remove the coffee dispenser by pulling it out.
5. Remove the top cover of the coffee dispenser and the bottom part, wash the parts in hot water, then dry and refit them.



6. Fill the milk jug with water and dispense milk by pressing button F.

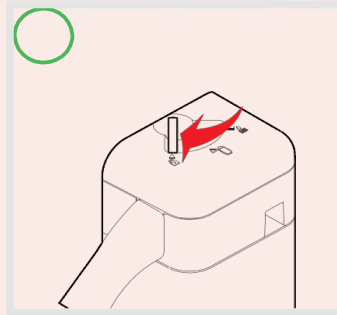




info@cuppaz.com

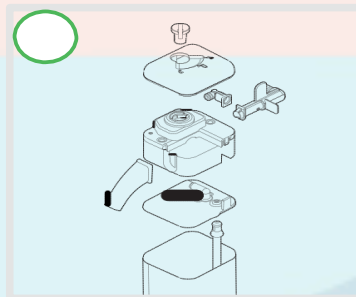
hotline: 852 2812 0428

7. Turn the milk jug knob clockwise to the left and remove the milk jug lid by pulling upward.

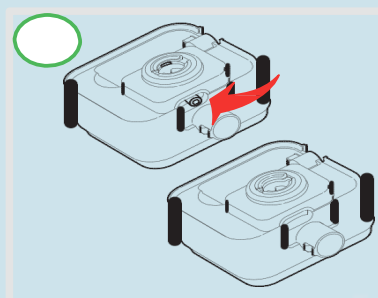


8. Wipe the steam outlet fitting (Z) with a damp cloth.

9. Remove the milk dispenser, wash the parts with a cleaning product, paying particular attention to the milk jug knob, dry and refit them.



10. Make sure the jug lid pin is in the correct position, otherwise turn it clockwise.

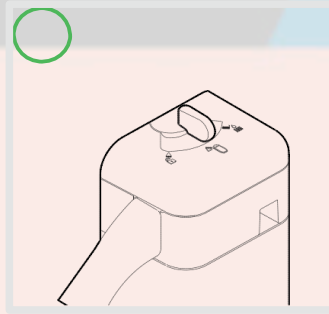




info@cuppaz.com

hotline: 852 2812 0428

11. Make sure the milk dispensing knob is in the dispensing position.



Note: Traces of the product just dispensed may remain in the circuit of the machine.

When switching from one product to another, to ensure the full flavour of the beverage it is advisable to do a brief rinse; rinsing is done like dispensing a coffee but without inserting a capsule.

12. Use a soft cloth and a neutral detergent to clean the surfaces of The Sleek. Do not use jets of water to clean The Sleek.



The plastic parts of The Sleek, including the water tank, are **not** dishwasher safe. So please do not put these parts in the dishwasher.





## The Sleek helps you save energy

After **10 minutes** of disuse the machine turns off automatically. To return to normal conditions of use, turn the machine on with the On/Off switch **I**. When buttons **A-B-C** light up steady, the appliance is ready to use. As well as the jug, it is advisable to always remove the milk dispenser if not dispensing beverages with milk; this is because the machine consumes more power when it detects the presence of the milk dispenser.

## The Sleek will let you know when its time to descale

The Sleek features an advanced program that monitors how much water is used to dispense beverages. This measurement provides the user with indications as to when The Sleek needs to be descaled.

When the indicator light **H** blinks **YELLOW**, it is advisable to do a descaling cycle, as illustrated below.

It is advisable to use the Caffitaly System descaling agent. It is designed to comply with the technical characteristics of The Sleek, in full observance of consumer safety. The descaler must be disposed of according to the manufacturer's instructions and/or the regulations in force in the country of use.

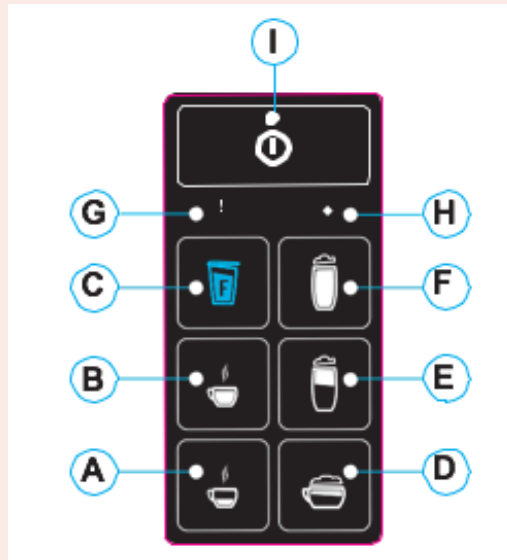
Please read the directions for use on the packaging of the descaling agent carefully. Avoid contact with eyes, skin and machine surfaces. During descaling do not turn the machine off and do not raise the lever. A person must be present during the operation. **Do not use vinegar: it could damage your appliance!**





## How to descale The Sleek in 15 steps

1. Switch The Sleek off by pressing the power on/off switch.

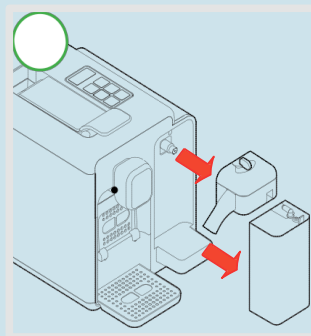


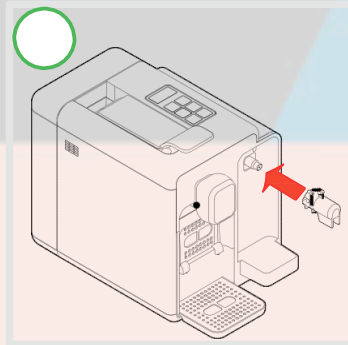
2. Empty and rinse out the used capsule drawer and drip tray.

3. Remove and empty the water tank.

4. Mix the contents of a bottle of Caffitaly System descaling agent with approximately 750 cc. of water (a total volume of 1 liter) and pour into the tank.

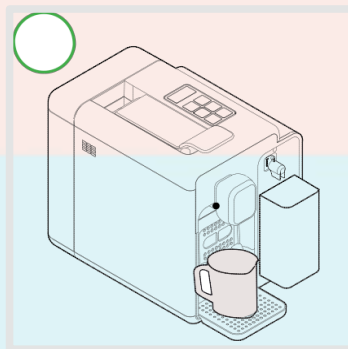
5. Remove the jug first and then the milk dispenser, and **fit the descaling connector in the special seat.**



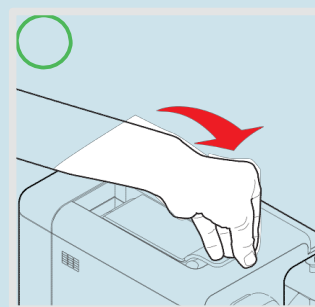


**Note: If the descaling connector is not properly fitted in the special milk jug seat, the descaling cycle cannot be done.**

6. Place a container (at least 500 ml) under the coffee dispenser and the milk jug under the descaling connector.

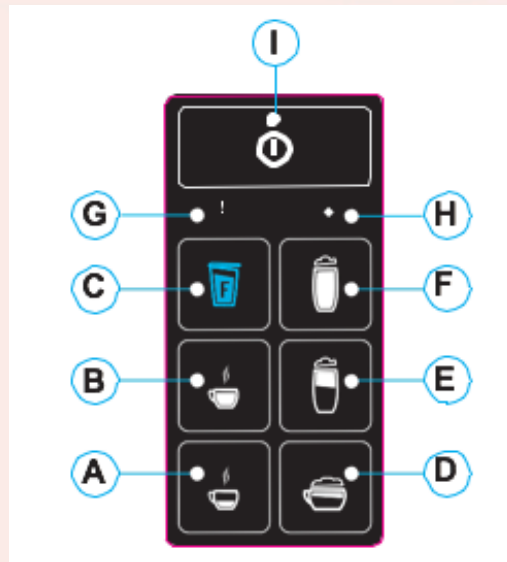


7. Make sure that the lever is lowered and there is not a capsule inside the capsule compartment.





8. Press and hold down buttons A and B while switching The Slek on by pressing the power on/off switch I.



Button B will light up, while warning light G and H blink alternately **YELLOW** and **RED**.

9. Press button B to start the descaling cycle.

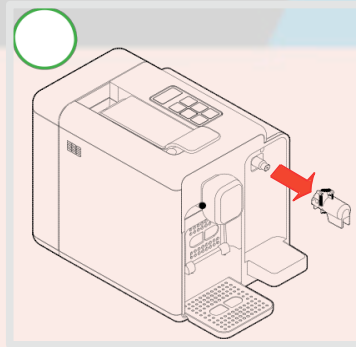
The Slek dispenses the descaling solution at intervals (5 doses with a 4-minute pause between each one, for a total duration of about 25 minutes). During this step, when the buttons must not be pressed, warning light G and H blink alternately **YELLOW** and **RED**.

10. When the first phase is over, button B lights up and the water tank is empty. Carefully rinse out the water tank and refill it with fresh water (500ml).

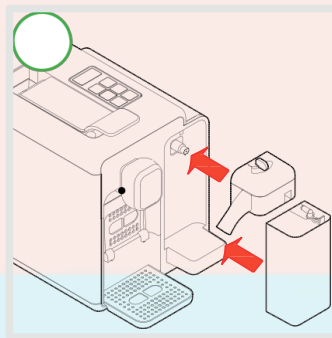
11. Press B to start the rinse cycle.

The machine delivers the rinsing water until the water tank is empty. During this phase, indicator lights **G** and **H** blink alternately **YELLOW** and **RED**. When the rinse cycle is completed, the machine returns to the "first use" state.

12. Remove the descaling connector.

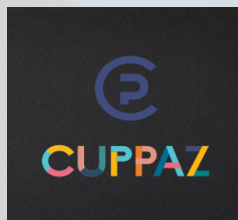


13. Fit the milk dispenser first and then the jug in its special place (Fig.5).



14. Carefully empty and rinse out the water tank and refill it with fresh, still water.

15. Press one of the buttons **A-B-C**. Wait for the machine to complete the water circuit filling cycle. The indicator **G** light goes off.

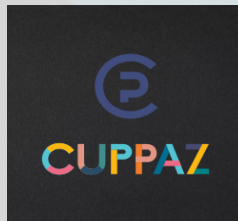


info@cuppaz.com

hotline: 852 2812 0428

## Troubleshooting with The Sleek














Problem	Possible Cause	Solution
No beverage is coming out. Warning light <b>G</b> blinks <b>RED</b> .	The water tank is empty.	Fill the tank with fresh water. Press a button A or B to refill the circuit. When the buttons remain steadily lit, the Sleek is ready for use.
The beverage is not hot enough.	- Cold cups. - Scale build-up in The Sleek.	- Preheat the cup. - Descale The Sleek.
The lever cannot be lowered.	- The used capsule drawer is full. - Capsule stuck inside the machine.	- Empty out the used capsule drawer. - Remove the used capsule.
Warning light <b>G</b> is lit steadily in <b>RED</b> .	Heating problems.	Switch The Sleek off and on again. If the problem persists, contact Cuppaz at <a href="mailto:info@cuppaz.com">info@cuppaz.com</a> or our Hotline: 852 2812 0428
When a button is pressed to dispense a beverage, The Sleek seems to work but then stops without dispensing any beverage or only dispenses a tiny amount.	Incorrect quantity programming.	Reprogram the quantity associated with that button. See section on "Programming the quantity of beverage in a cup".
Espresso is dispensed very slowly, and is of poor quality.	Button <b>C</b> was used with an espresso capsule.	Use button <b>A</b> or <b>B</b>
The milk jug will not fit.	Wrong position of pin in jug lid.	See section "Daily Cleaning".



info@cuppaz.com

hotline: 852 2812 0428

## Technical Data on The Sleek

 Approx. 6 kg	 See the data plate on the bottom of the machine.
 1.3 litres	 Max. 15 bar
 ambient temperature: 10°C ÷ 40°C	 < 70dB A
  375 mm	 18 capsules
  220 mm  280 mm  360 mm	

The materials and objects in contact with food products comply with the requirements of European Regulation 1935/2004.



## Recycling and Responsible Disposal



The Sleek has been manufactured using high quality materials that can be reused or recycled. Dispose of The Sleek in a suitable waste collection center.

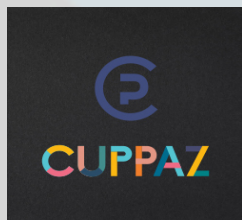


In Hong Kong there are recycle centers for electronic equipment. At the end of its useful life, The Sleek should not be disposed of with unsorted household waste. It should be taken to a suitable selective waste collection center set up by the local authorities. More information can be found here:

<http://www.gov.hk/en/residents/environment/waste/wastedrecyc.htm>.

Separate collection of electrical household appliances help the environment because the materials of The Sleek can be recovered so as to achieve significant savings of energy and resources. The crossed-out wheelie bin symbol highlights the need to dispose of electric appliances separately. The packaging is made from recyclable materials.

info@cuppaz.com



hotline: 852 2812 0428

**Scan to Order Cuppaz Machines**



**Scan to Order Cuppaz Capsules**

